

# **VERTICAL DOORS, INC.**

*VerticalDoors.com*

542 3<sup>rd</sup> St. Lake Elsinore, CA 92530  
Tel: 951.245.8669 Fax 951.245.5481

**VERTICAL DOORS, INC.**



## **CORVETTE "C8" 2020 Vertical Door Kit**

**U.S. PATENTS**

**#6,808,223; #6,845,547; #7,140,075; #7,059,655**

**PATENTS AGGRESSIVELY ENFORCED!**

**PLEASE CAREFULLY READ ALL INSTRUCTIONS BEFORE  
ATTEMPTING TO INSTALL THIS PRODUCT.**

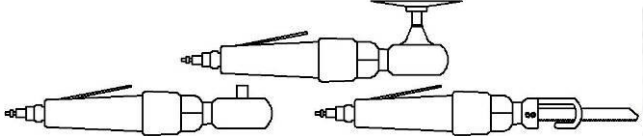
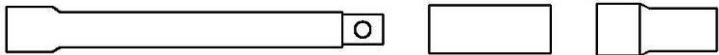
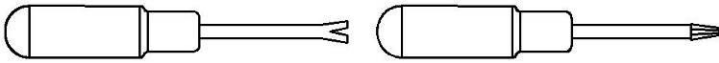


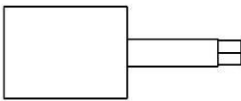

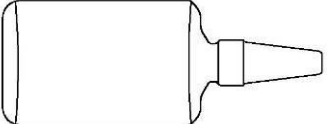
**FOR QUESTIONS PLEASE**

**CALL (951) 245-8669**

## THIS KIT INCLUDES:

➤ 8 LONG BOLTS WITH WASHERS	➤ 2 LONG SHOCKS
➤ 6 SHORT BOLTS WITH WASHERS	➤ 2 SHOULDER BOLTS
➤ RIGHT AND LEFT HINGE ASSEMBLY	➤ 2 PINS

## TOOLS REQUIRED FOR INSTALLATION:

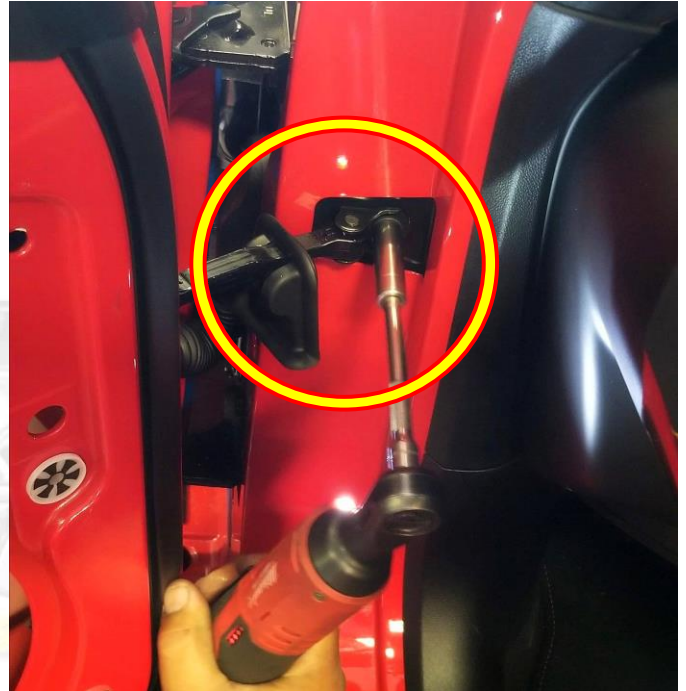
	➤ AIR RACHET, GRINDER AND CUTTER.
	➤ 7MM, 8MM, 10MM, 11MM, 13MM, SOCKETS AND EXTENSION.
	➤ FORK AND PHILLIP'S SCREW DRIVERS
	➤ SPACERS FOR THE DOOR GAP.
	➤ 3/16 ALLEN WRENCH
	➤ 1/4 & T15 TORX BIT
	➤ 9/16 WRENCH
	➤ LOCKTITE RED

**OTHER TOOLS MAY BE NEEDED DEPENDING ON YOUR VEHICLE.**

**(Note: The pictures in the manual are for reference only they may not match your vehicle.)**

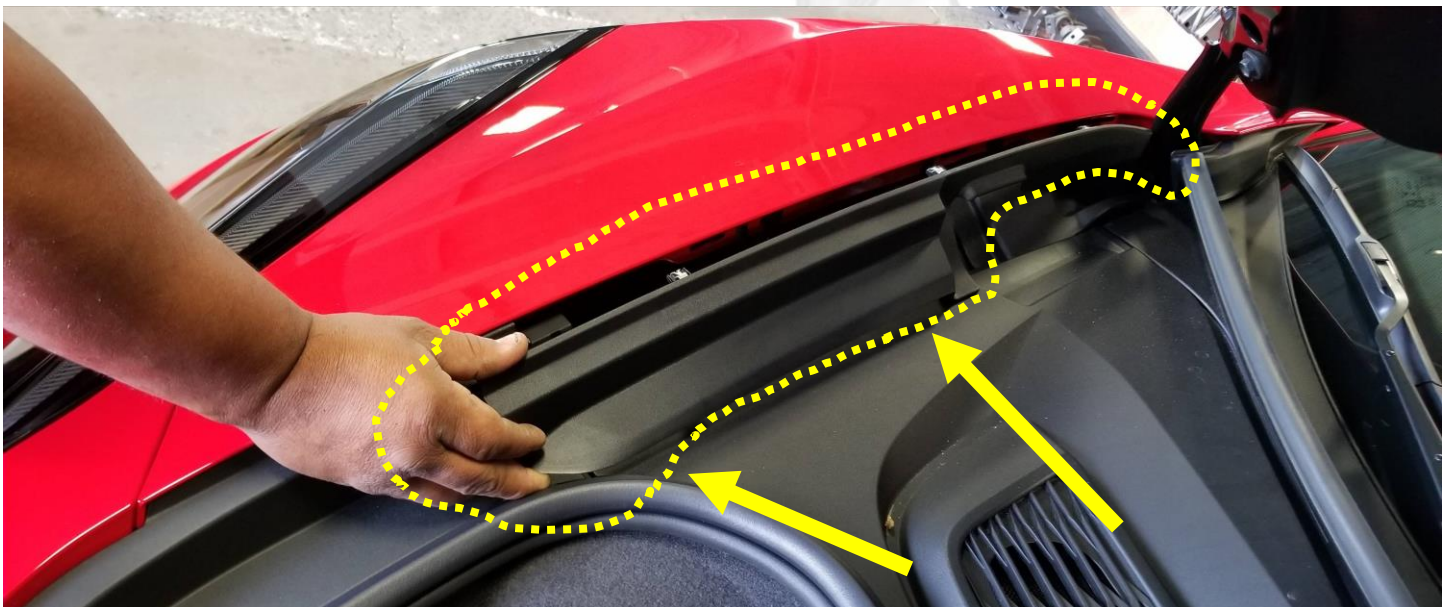
### **Disconnect the battery.**

Pull the rubber cover over the door catch out from its location. Unbolt the door catch from the apron. You will retrieve it from inside the door later when you remove the door panel and speaker.



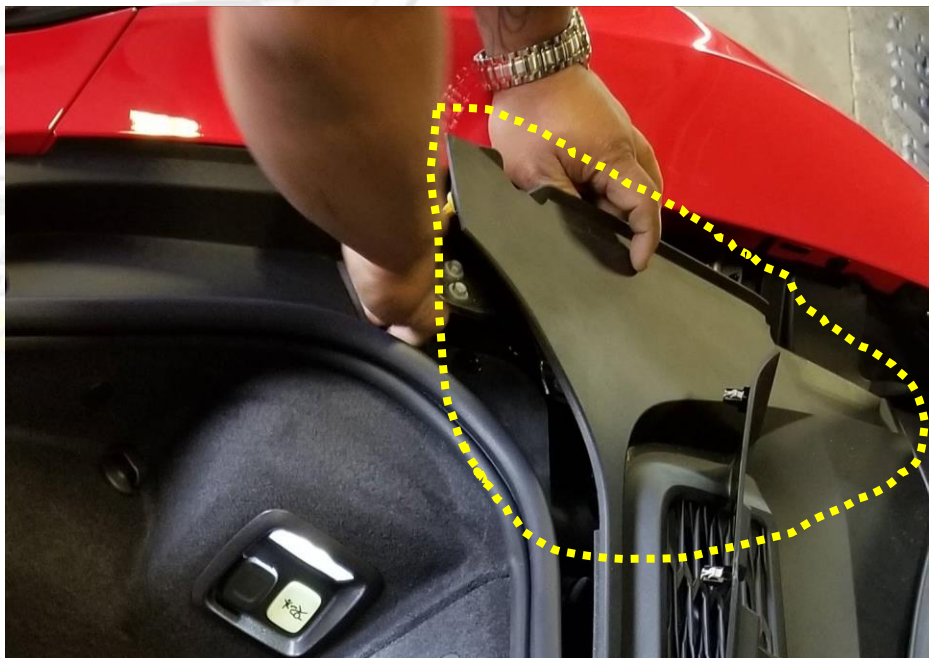
### **Remove the Front Bumper:**

Remove the front plastic trim. Pull on it to release the clips. This is necessary to gain access to the bolts securing the bumper and fenders



Remove the side trim pieces on each side covering the fender bolts first by pulling on them. (Circled Above)

Pull up on this trim panel on each side that way you can remove the piece in front of it. (Circled to the right)





Now you can remove the panel covering the bumper bolts by pulling up on it to release clips

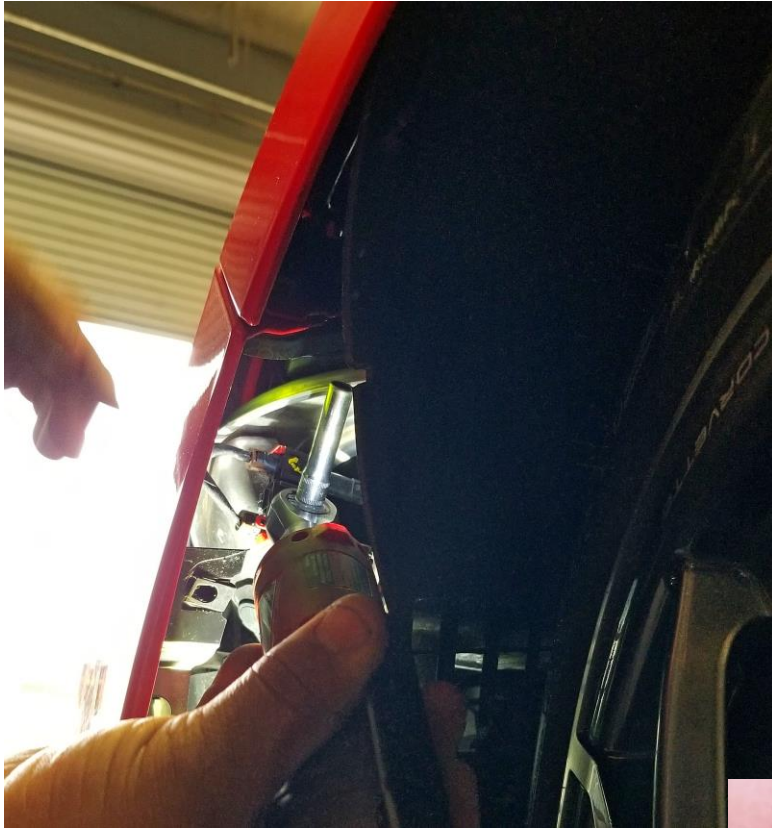


Remove all the bolts and plastic clips securing the bumper to the body and fenders. (6 on top, 1 more on each side hidden)

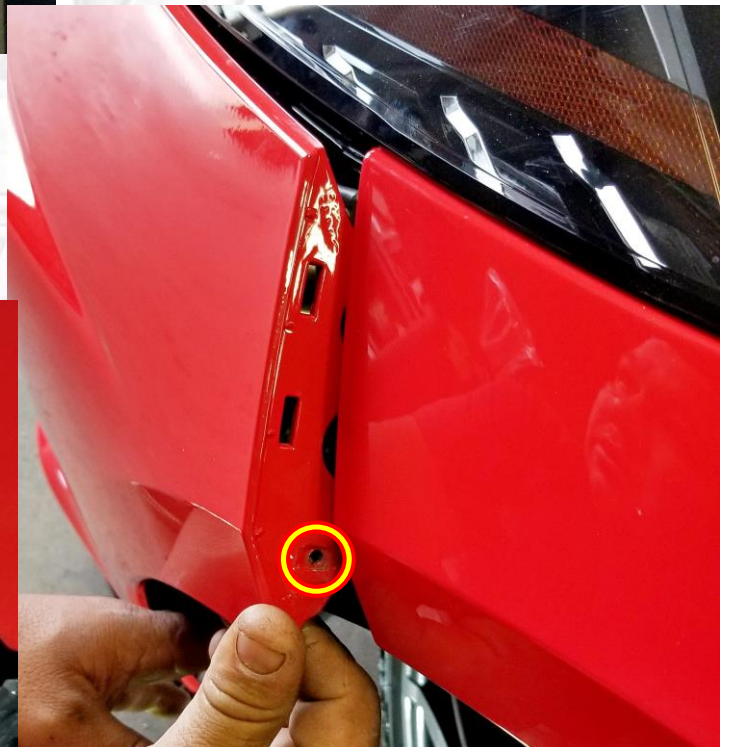


You will need to remove all the fasteners under the front bumper to be able to release it

Remove the screws (4 on each side, 4 underneath) attaching the wheel well to the bumper. Turn the steering wheel all the way for access. Then you can remove the bolt securing the bumper on each side



Remove the hidden bolt from the inside holding the bumper on each side as shown above and removed to the right



When removing the bumper, carefully unplug all wire harnesses attached to it. (Connectors: 2 on driver side, 1 on passenger side)



## Remove the Fender:

Remove all the bolts and fasteners from the fender.

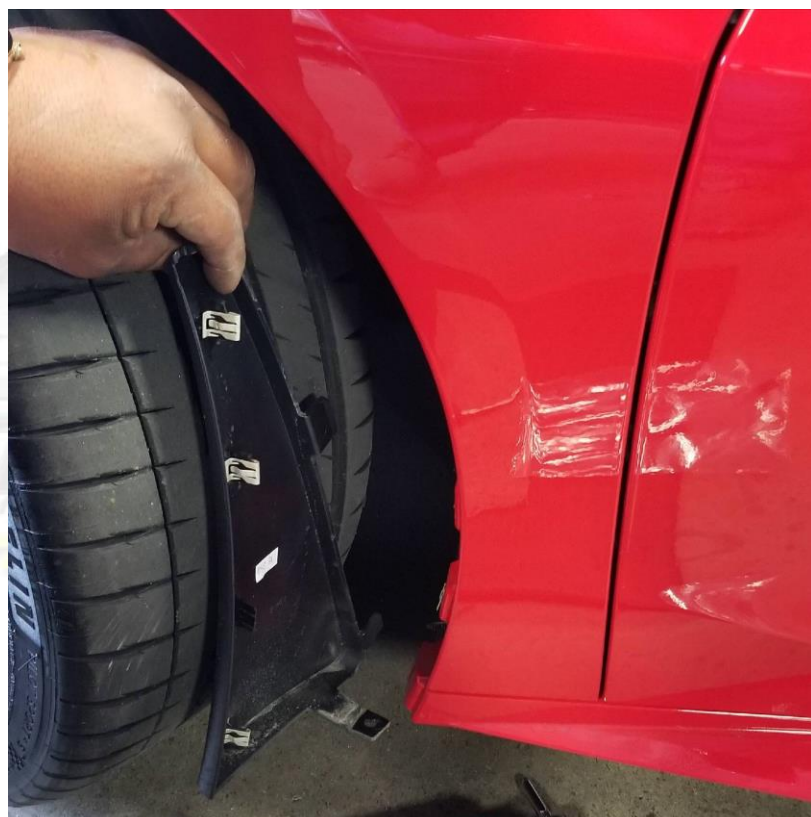


3 screws on top and 1 plastic fastener (Arrow)



2 bolts on the inside holding the front portion of the fender (accessed from the direction the arrows are pointing)

Remove the plastic trim from behind the wheel well by pulling on it. You can then remove the screws/bolts holding the fender.





Remove the 3 screws (2 circled to the left 1 underneath) from the fender liner that way you can access the fender bolt.

Pull back the liner and remove the bolt holding the fender. (Circled to the right)



Further pull back the liner to remove 1 more hidden bolt



Remove 1 fender bolt (circled left) with the door open.



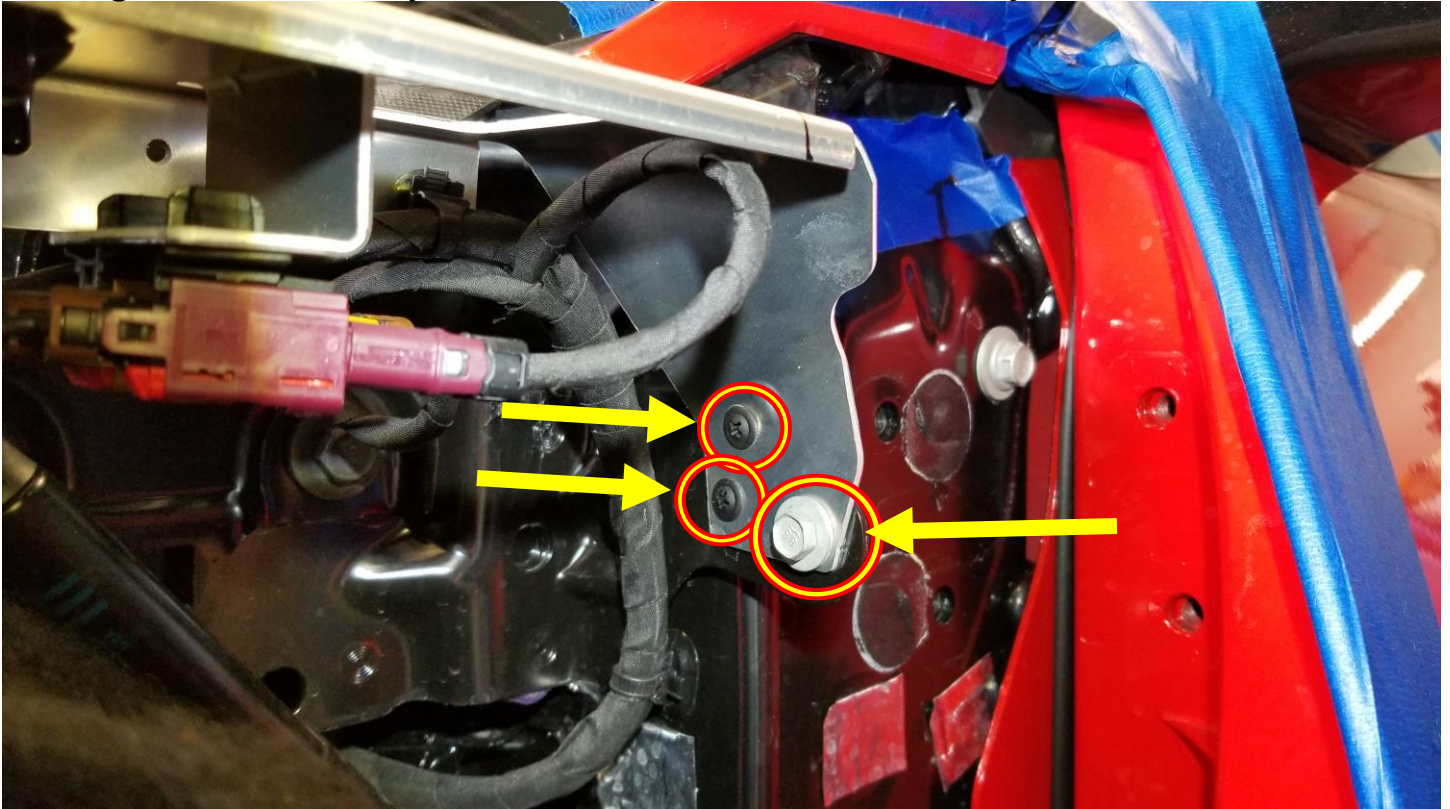
Now you can remove the fender



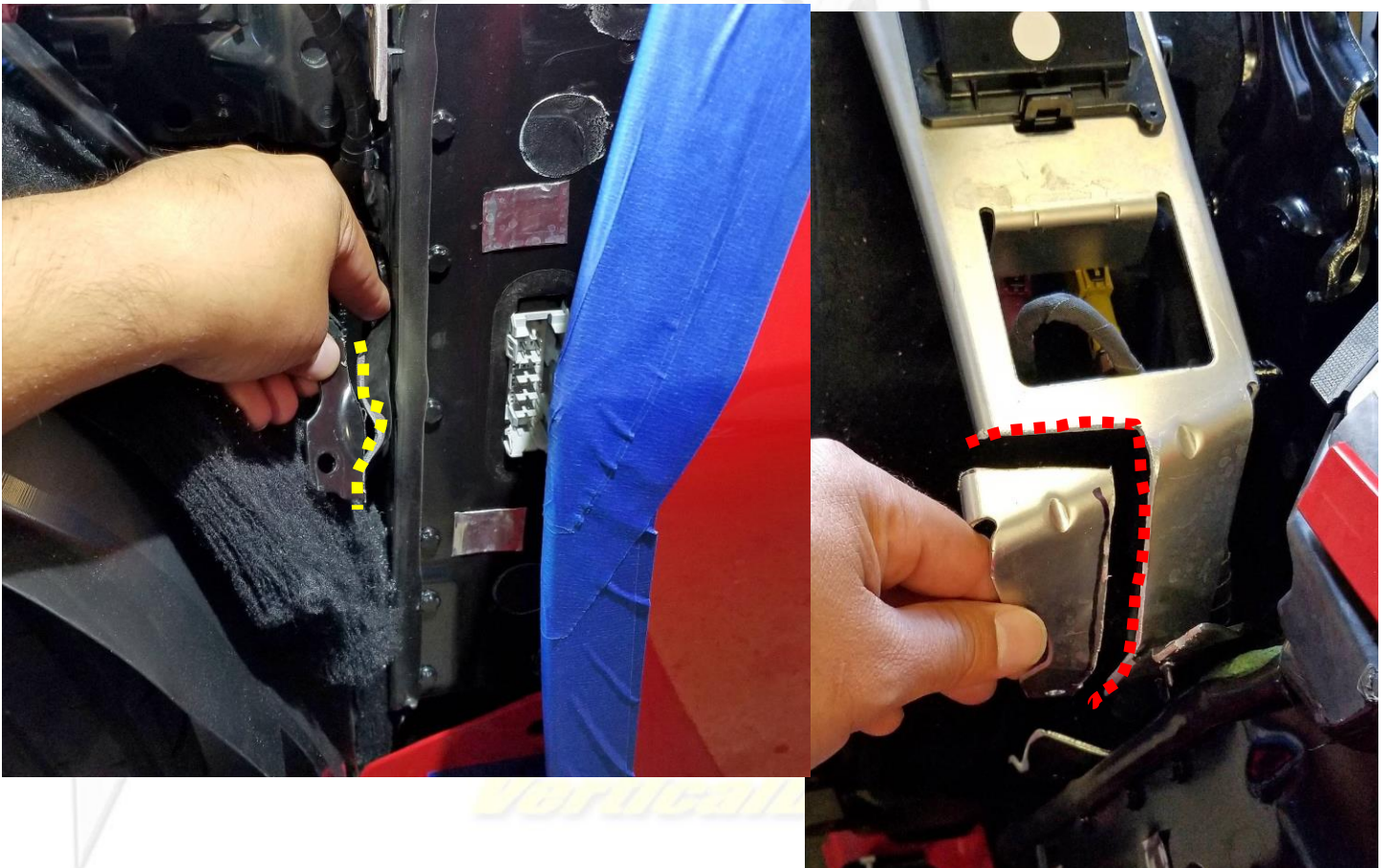


## Preparing the car for the New Vertical Door Hinge:

You will have to do some minor trimming so that the hinge can sit flat against the body. Trim the pieces outlined by dashed lines



Add 2 self-tapping screws as shown above (To re-enforce the part once you trim it) Remove the circled bolt to the right of the bottom screw.



You will need to remove the door panel and the speaker to be able to remove the door catch. Two nuts secure it from the door jamb side.



Remove the cover circled to the left with a plastic pry tool. (Remove any junk you have here first) You will then gain access to the bolts. Remove 2 bolts circled below.



Remove 2 bolts below the door panel (Circled Below)

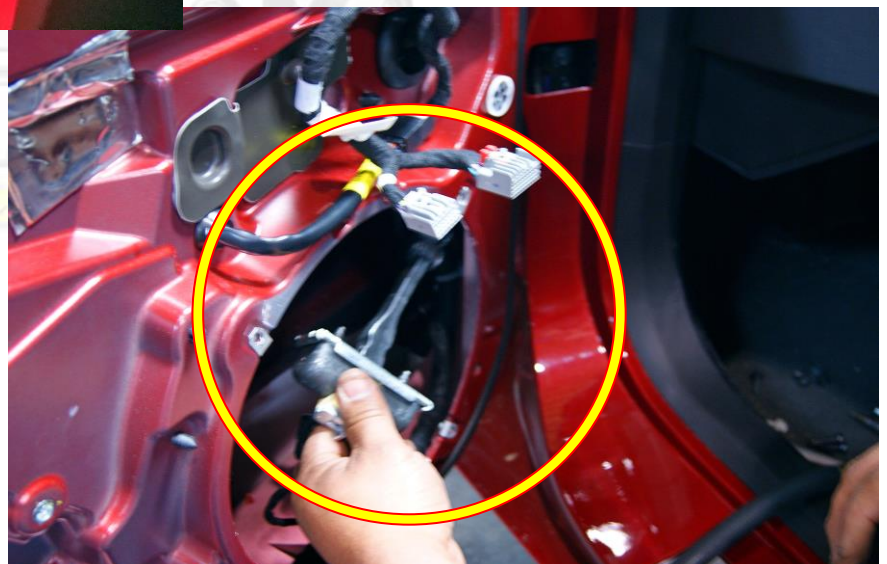


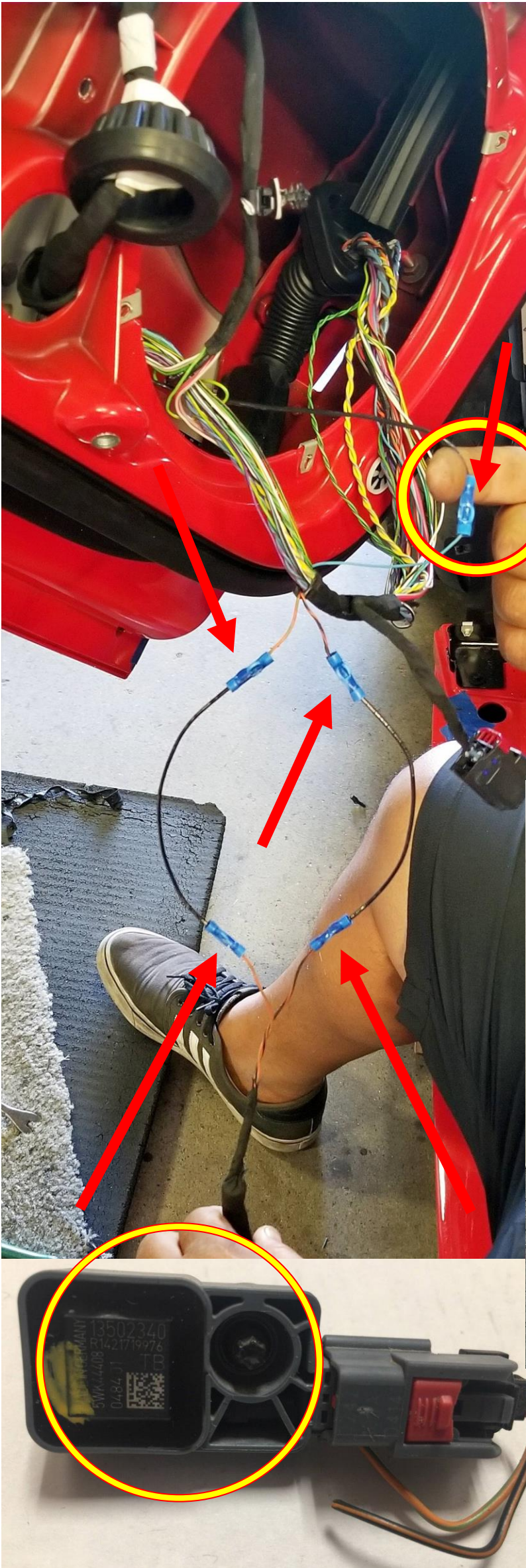
Remove the panel by pulling on it to release the clips. Then disconnect both electrical connectors.



Remove the speaker by removing 4 screws. (Circled Below)

Remove the door catch by removing 2 nuts (Circled Below) You should have already removed the other bolt previously.

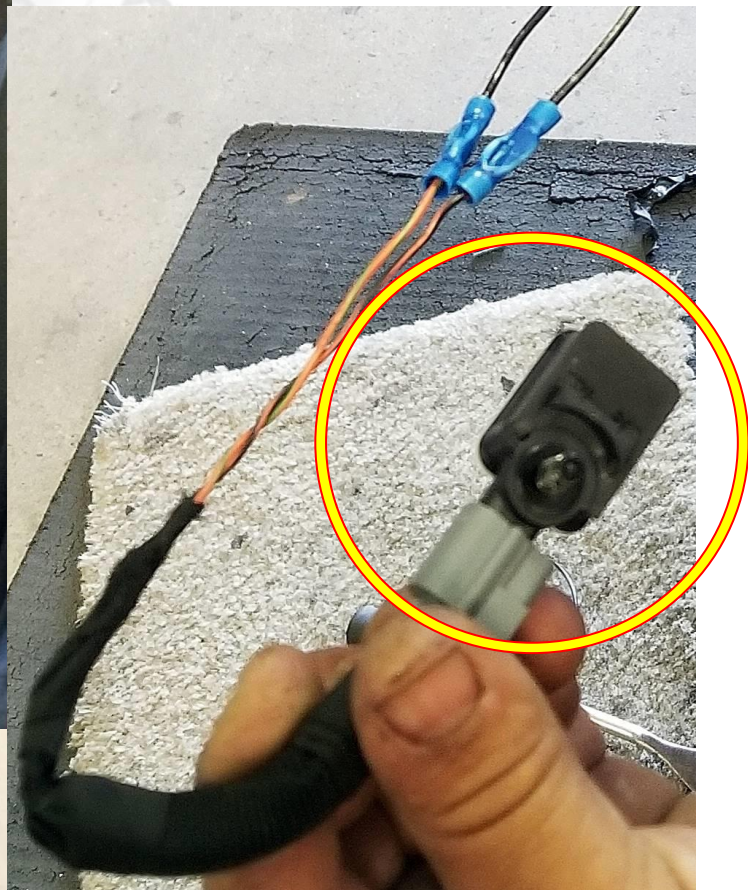




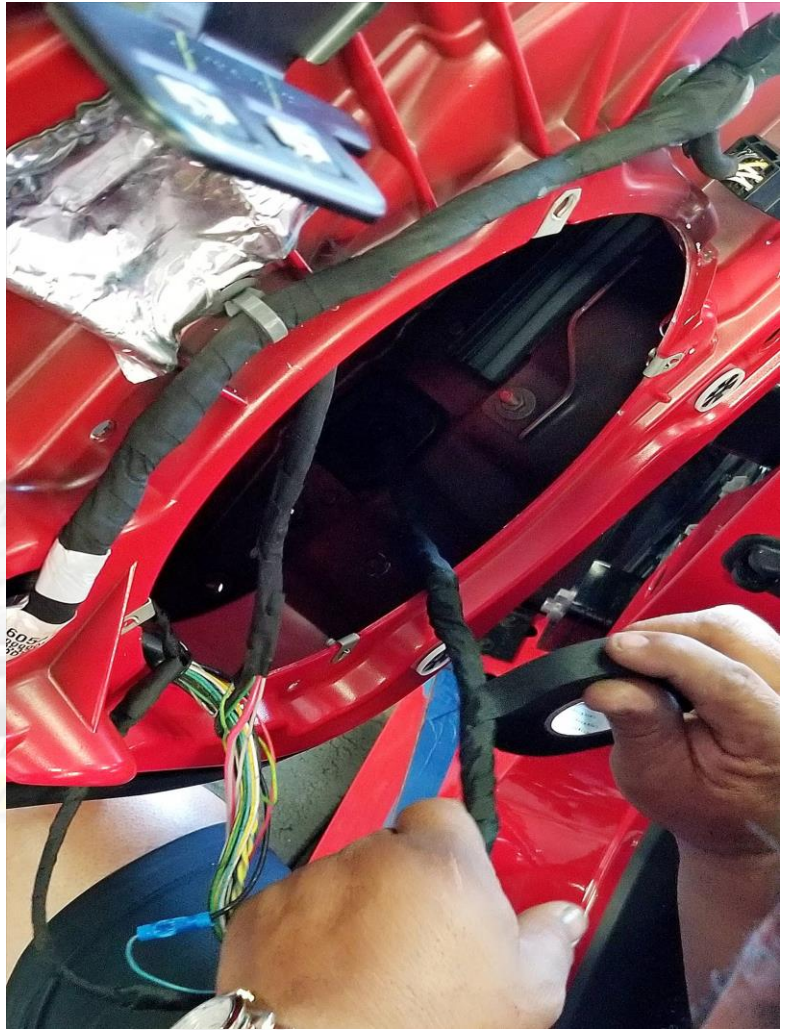
## Lengthening the wires:

After removing the door panel and speaker, you will have access to the wire harness. You must un-do the hold downs securing the wiring and remove the tape covering the wires. There are 3 wires on the driver side that you must extend and 2 on the passenger side.

2 of the wires are for the SRS Sensor. This will be the same sensor on each side. The other wire in the driver door is for the power door lock (Circled left)



Wrap wires with a cloth tape for protection and flexibility. If you use regular electrical tape or you try to use loom the wires will bind up or pinch when you shut the door.



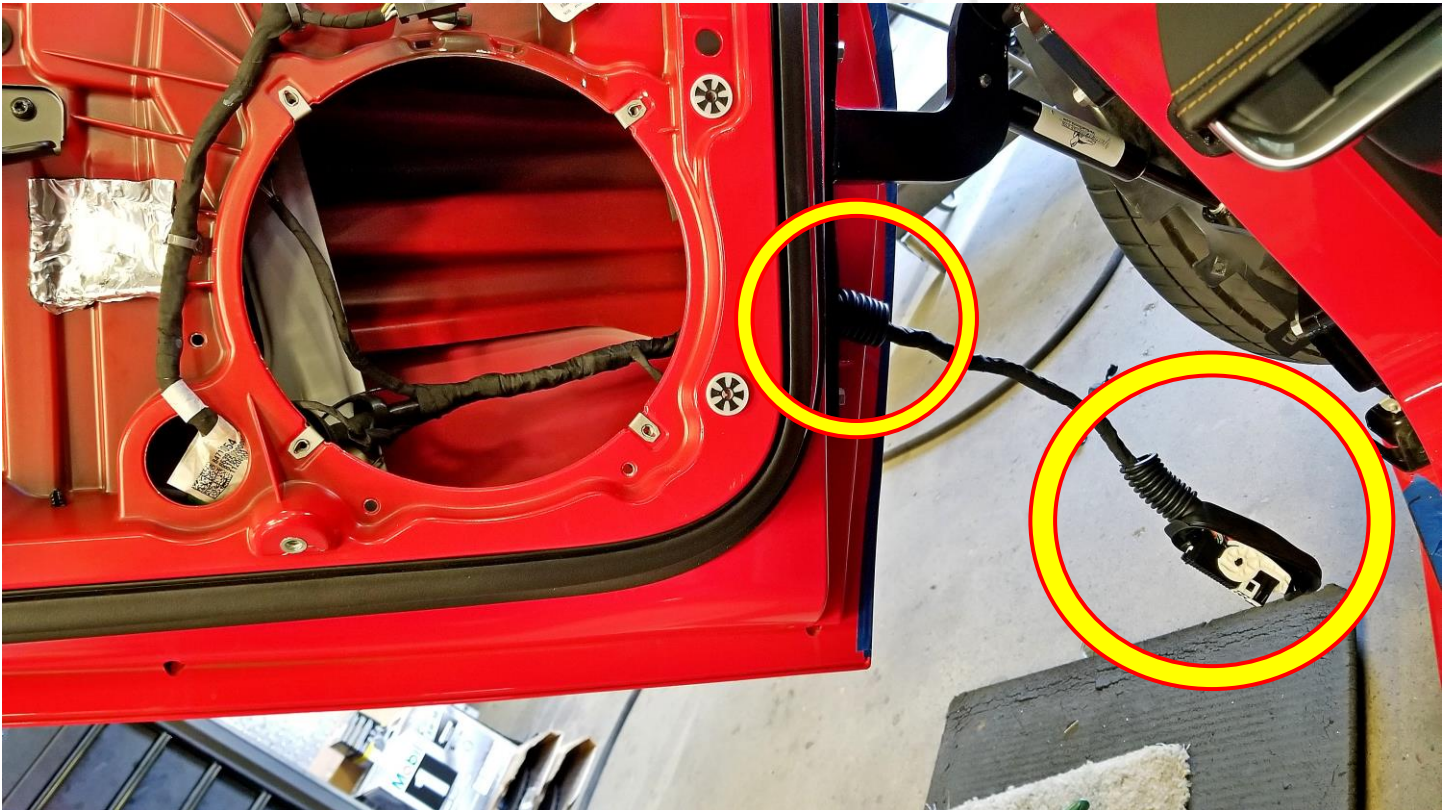
**VERTICAL DOORS, INC.**



You will need to modify the rubber boot as shown below



Cut the rubber wire boot in half as shown.



Secure each end of the boot around the wires with a zip-tie so that it is watertight as shown to the right.



## Prepare to Remove the factory hinges:

Before removing the factory hinges, use painters' tape to mark the factory location of the door. Place the painters' tape in the locations circled and make marks on the tape as shown for reference later.

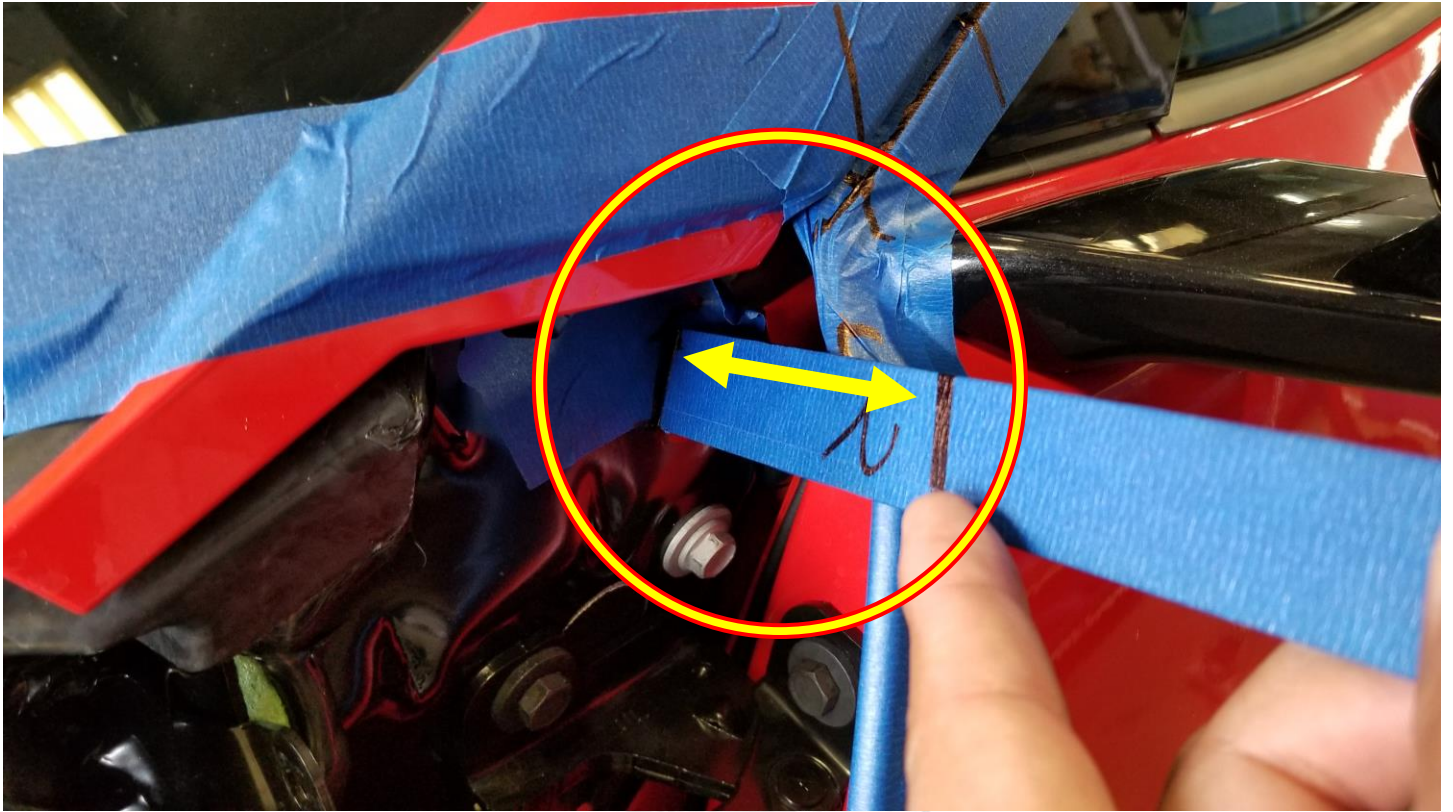


Use several strips of 2" painters' tape as shown to secure the door.

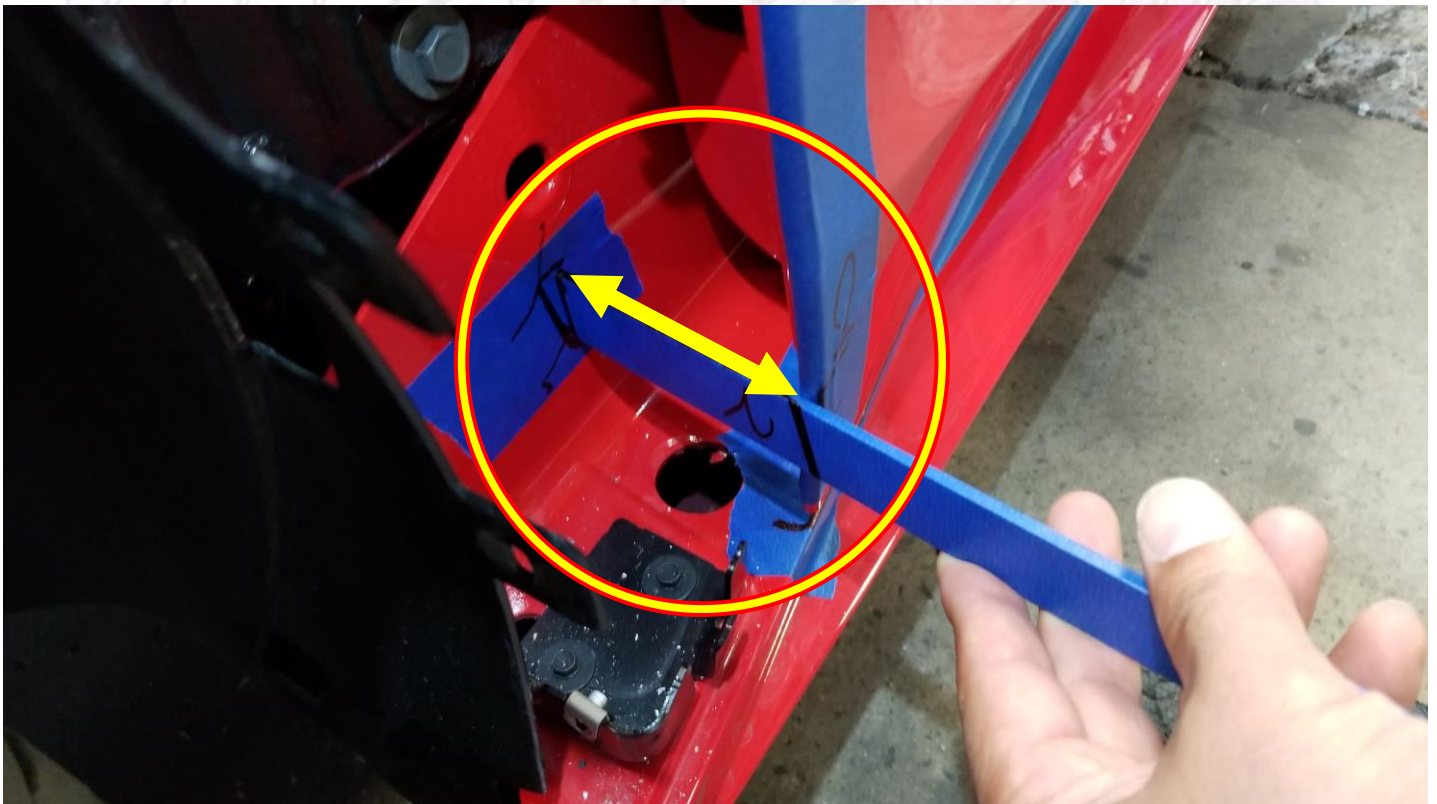


**Tip:** Cut a couple 3-inch pieces of paint stick to use as shims so the door does not move when you remove the factory hinges. Use them under and behind the door. Wrap them with painters' tape to get the exact thickness you need to shim the door.

Make sure to measure and mark the distance between the body and the outer door skin at the front of the door by the top and bottom door hinge. Use paint sticks or something similar that you can hold square to the body and can extend past the edge of the door. Mark the location of the stick against the body on a piece of painters' tape applied to the body. Mark the edge of the door on the stick.



*\*\*It is very important you mark the exact location of the door before you remove the factory hinges. This will make the install and alignment a lot easier\*\*\**





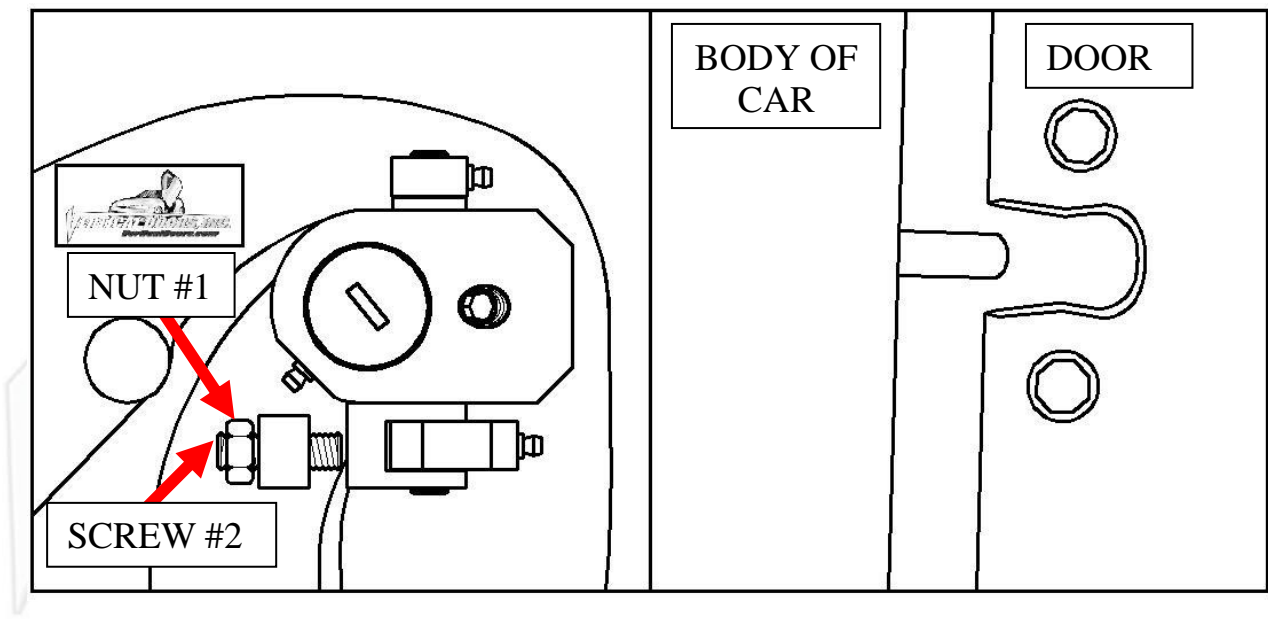
After you have marked the door location, secured the door to the body, and installed the shims, you can then remove the factory hinges and install the VDI Hinge.

Photo shows VDI Hinge bolted in place  
(Long bolts go on body, short bolts go on door)

Hint\* Tighten bolts on door first



Once hinge is locked in place, break nut #1 then turn Allen set screw #2 on fig until it hits the block then open the door and continue to adjust until the door matches with the striker, open and close door making sure it closes like factory.

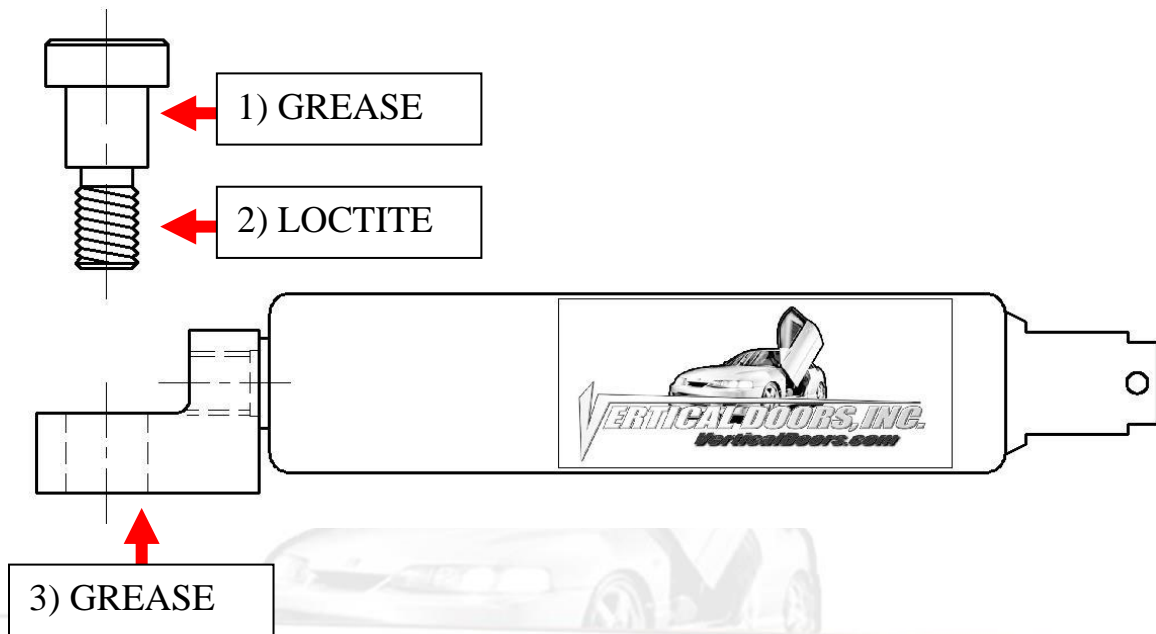


*Hint\*(leave #1 nut loose until shock is installed Allen set screw will have to be re-adjusted after shock is installed.*

### **Install the shock.**

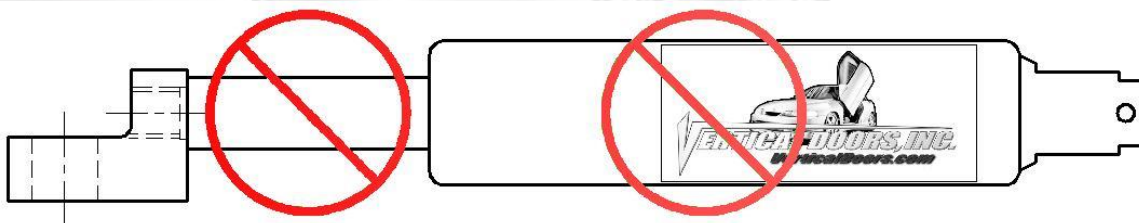
(We recommend a helper to hold the door up during this process)





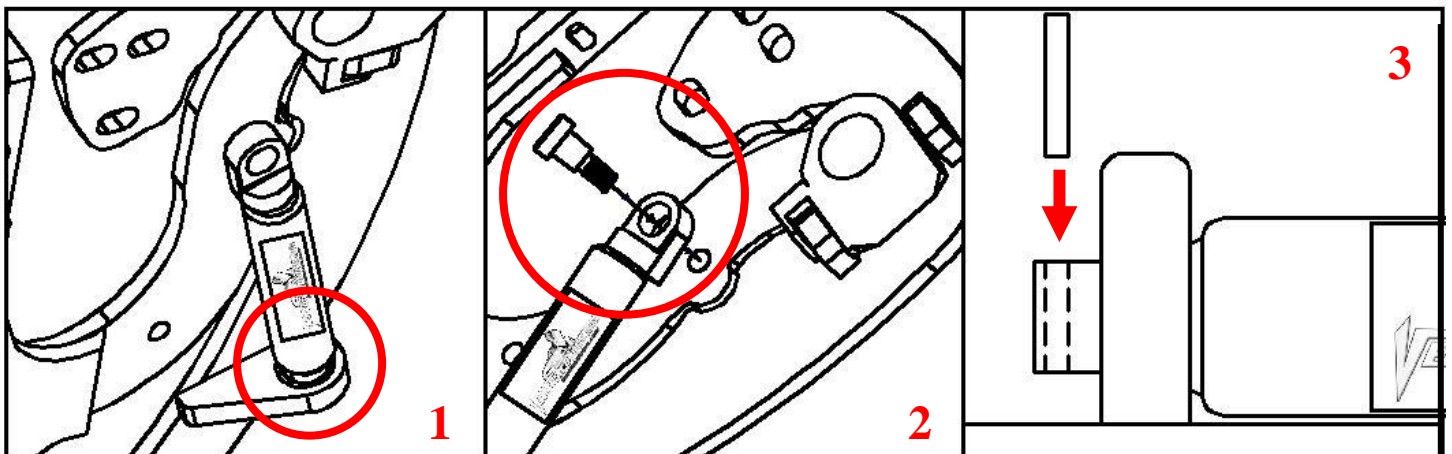
**\*IMPORTANT STEP: DO NOT SKIP THIS STEP. THIS STEP IS CRUCIAL IN YOUR INSTALLATION PROCESS, IF THIS STEP IS NOT COMPLETED WHEN INSTALLING THE VERTICAL DOOR KIT; ALL WARRANTIES ARE VOIDED, AND MAY CAUSE FUTURE PROBLEMS WITH YOUR VERTICAL DOOR SYSTEM.**

- 1<sup>ST</sup>, make sure you put grease on the body of shoulder bolt where the arrow is pointing.
- 2<sup>ND</sup>, make sure you put red Loctite, where the arrow is pointing, on thread of shoulder bolt.
- 3<sup>RD</sup>, make sure you put grease on the bottom side of the shock end.

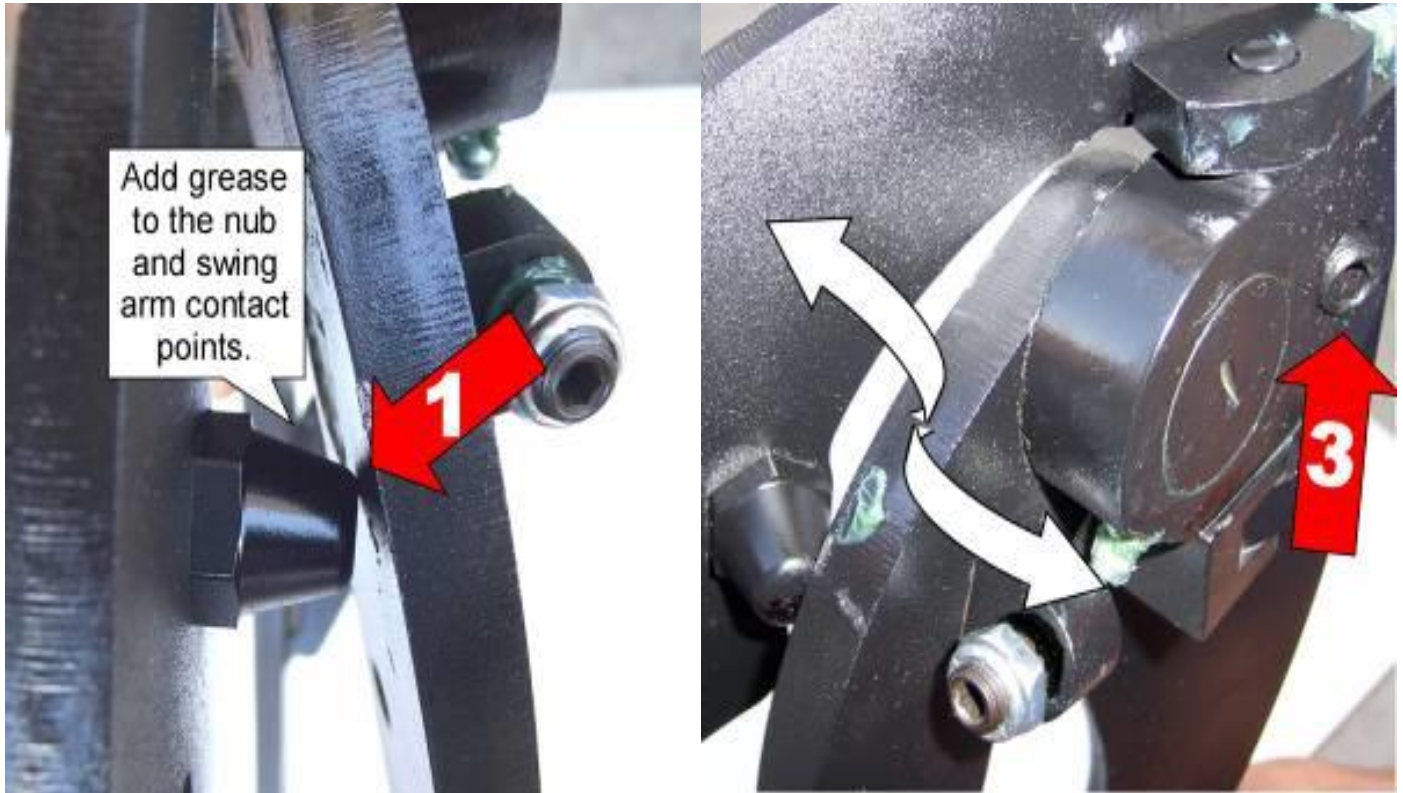


**WARNING! THE USE OF ANY TYPE PLYERS, PAINT OR FOREIGN MATERIALS ON THE SHOCK'S BODY OR SHAFT WILL VOID THE WARRANTY.**

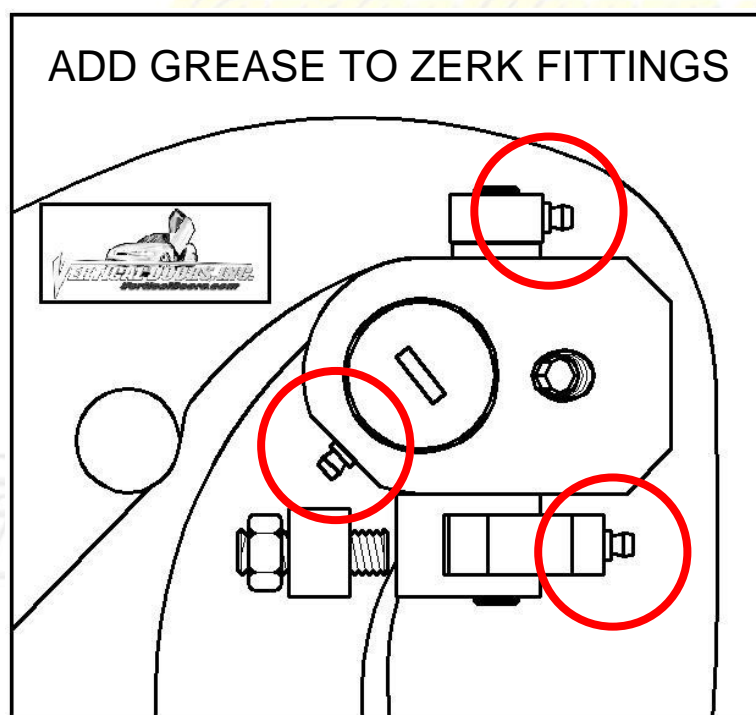
*(Slip the spherical rod mount into the spherical ball bearing (1). Using a 1/4 Allen wrench, tighten the screw into the swing arm (2). After the shock is installed secure it by installing the pin in the bottom shock end (3).)*



IMPORTANT; BEFORE CLOSING THE DOOR FOR THE FIRST TIME, adjust door opening screw #3 clockwise until distance between nub (#1) and the swing arm is about the thickness of a credit card.

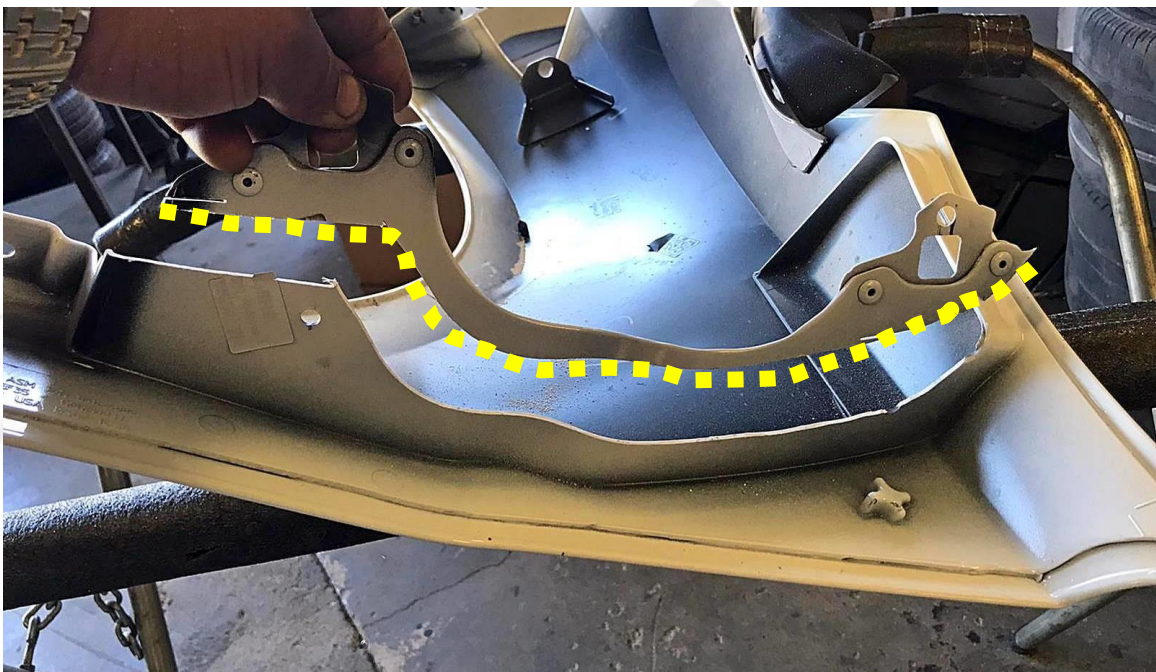


*Hint\* (Fine tune the Allen set screw (#2) to realign the striker with door. After the door is aligned, test door by opening, closing, lifting and lowering the door several times.*





Cut the inner lip of your fender as shown below. (Dashed Line)



Use a power cutter and grinder to cut and take any sharp edges off. Touch it up with paint to give it a finish look.

*Before Fender Trim:*



*Remove insulation.*



**VERTICAL DOORS, INC.**  
*VerticalDoors.com*

Replace the fender by reversing the steps.

For the other side just follow the same steps.

Reinstall the bumper last reversing the steps above

*Hint\*(Make sure the electrical wires don't get pinched enough to damage wires)*

**Note: Do not install fender until the adjustment of the door is accurate, and the set screw is tightly secure. Also make sure everything is tight, adjustment is set and everything is Loctite.**

**Please Note: on some C8's, in order to maintain factory gaps, a small portion must be shaved from the front edge of the door. We apply tape to both the edge of the door and fender and then wait to re-install the fender in order to check clearance. After that we can decide if it needs to be done. This can easily be done with sandpaper and a block.**



**It is recommended to have touch up paint for the vehicle so that you can touch this up as well as the edge of the fender when you trim it**

Thank you for your purchase of the  
CORVETTE C8

# ***VERTICAL DOORS INC. SYSTEM***

***VERTICAL DOORS, INC.***  
*VerticalDoors.com*



***VERTICAL DOORS, INC.***  
*VerticalDoors.com*



***VERTICAL DOORS, INC.***  
*VerticalDoors.com*

## NOTE:

Vertical Doors Inc. assumes no responsibility for any damages caused by improper installation.